

ESPECIFICACIONES TÉCNICAS



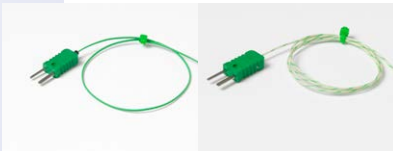
DATAPAQ Q18 micro data logger DQ1804



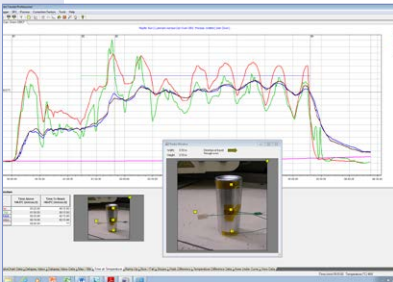
Pin line mount bracket TB0073



IBO mount catch TB0074/75/76



Adhesive patch probe PA1620/21 Glass fiber probe PA1614/15



Oven Tracker Insight software

DATAPAQ Q18 MICRO REGISTRADOR DE DATOS

TOP	DQ1804
DimensionFs B x B x I	17 x 35 x 148 mm (0.67 x 1.38 x 5.83 QMHBEET)
CBOBMT	4 x TOP K
TFSNPQBSFT	OD TEFN SPN BSB
5FNQFSBUSBUFSOB	85 °C (185 °F)
N BEFPQFSBD	
3BOHPEFNFE	-200 to 1,370 °C (-328 to 2,498 °F)
1SFD	±0.5 °C (±0.9 °F)
Memor	32,000 readings per channel
BatFSBTQMBT	2 cell NiMH user replaceable (BP1077)
5ENQTPDPOCBUFSB	20 hours (0.5 s at 25 °C [77 °F])
1FTP	155 g (0.34 lbs)

TB0073

FSPEFNPEFMP	TB0072
Construc	FSPEFCMFDPOBTMBNEUPNBSQPSPPT
DimensionFs d x w x vh	41 x 48 x 195 mm (1.61 x 1.89 x 7.68 QMHBEET)
1FTP	311 g (0.69 lbs)

TemperaturB	200 °C (392 °F)	250 °C (482 °F)	300 °C (572 °F)
1SPUFDDUSNB	11 min	10 min	9 min

TB0073

4PQPSUFEFNPOUBKFBKTEBEPDPOMBCBSSFSBNPOPCMPRE5QBSBQFSNBSREFODBKFSFDUBNFOUFFOPEFMPPTQTEFUSPNNDEFMBDBEFQBTBEPST4PQPSUFEFNPOUBKFBKTUBEPQBSBBEBQBSTFBMENFUSPEFQ

1FTP	390 g (0.86 lbs) (CBSSFSB- moOEPS)
TQBDBEPNPFOSFQ	>45 mm (1.8 QMHBEET)

TB0074 & TB0075

POUSBEFBHSSFNPEPDPOMBCBSSFSBNPOPCMPRE5QBSBQFSNBSREFODBKFTFHSPFOMBDFUTUBEQSPEZUPEFMNPOPCMPRE

TOP	TB0074 1FR	TB0075 MedTOP	TB0076 (SBOEF
5BNB x PD OEPT DD	55 mm (2.16 QMH)	70 mm (2.76 QMH)	95 mm (3.74 QMH)
OD SB BQFS BDFT	51 mm (2.00 QMH)	59 mm (2.32 QMH)	72 mm (2.83 pulg.)
1FTP (barrFSB + BHSSSF	343 g (0.76 lbs)	350 g (0.77 lbs)	363 g (0.80 lbs)

THERMOPARES

- PA1620** Termopar de parche adhesivo, longitud 0,3 m (12 pulg.), Enchufe micro-miniatura PTFE <265 ° C (509 ° F)
- PA1621** Termopar de parche adhesivo, longitud 0,5 m (20 pulg.), Tapón micro-miniatura PTFE <265 ° C (509 ° F)
- PA1614** Sonda unión a prueba de respuesta rápida, long. 0,3 m (12 pulg), conector micro-miniatura GF <355 ° C (671 ° F)
- PA1615** Sonda unión expuesta a rápida respuesta, long. 0,5 m (20 pulgadas), enchufe micro-miniatura GF <355 ° C (671 ° F)

INSIGHT™ SOFTWARE

El software de análisis de Oven Tracker® Insight permite una completa revisión, análisis y control de datos del proceso monobloque. Disponible en paquetes básicos o profesionales. Consulte la hoja de datos de análisis de Insight para obtener la especificación completa.

Fluke Process Instruments

EMEA
Cambridge, UK
Tel: +44 1223 652 400
sales@flukeprocessinstruments.co.uk

Americas
Derry, NH USA
Tel: +1 603 537 2680
sales@flukeprocessinstruments.com

China
Beijing, China
Tel: +86 10 6438 4691
sales@flukeprocessinstruments.com.cn

Asia East and South
India Tel: +91 22 2920 7691
Singapore Tel: +65 6799 5596
sales.asia@flukeprocessinstruments.com

Worldwide Service
Fluke Process Instruments offers services, including repair and calibration. For more information, contact your local office.

www.flukeprocessinstruments.com

© 2016 Fluke Process Instruments
Specifications subject to change without notice.
12/2016 DS_OT_MonoPaq2_Rev_A

