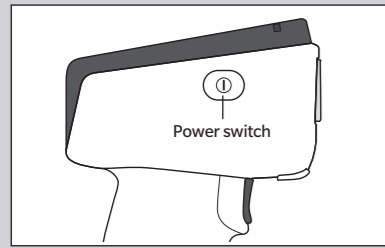


1. Encendido



Mantenga pulsado el interruptor de encendido durante aproximadamente 1 segundo.

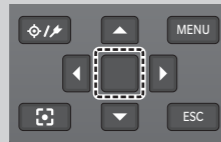
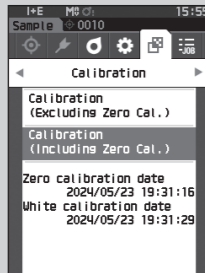
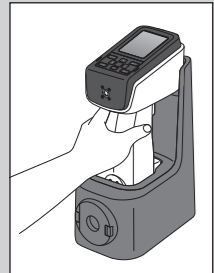
2. Calibración

Panel de control

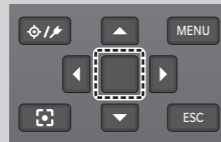


Tecla [Confirmación]

Calibración Cero

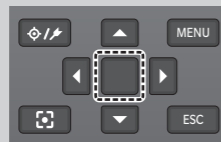
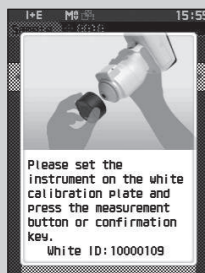
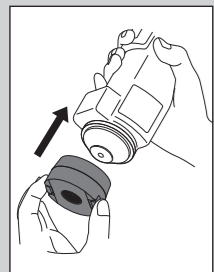


Presione la tecla tecla [Confirmación]



Presione la tecla tecla [Confirmación]

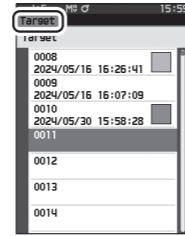
Calibración de blanco



Presione la tecla tecla [Confirmación]

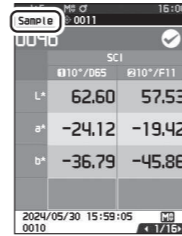
3. Medición

Pantalla de lista de objetivos

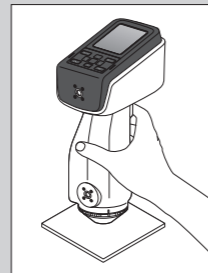


ESC

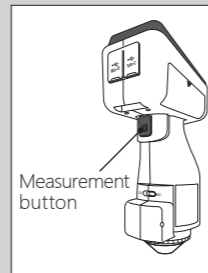
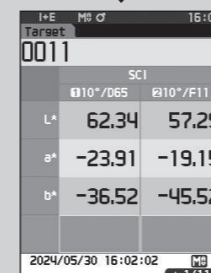
Pantalla de muestras



Medición del objetivo

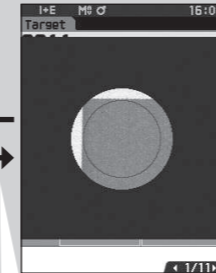


Cambiar pantalla objetivo



Measurement button

(confirmar el punto de medición) *Sólo CM-17d

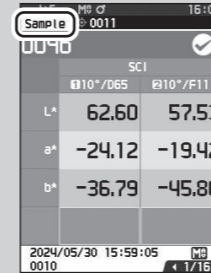
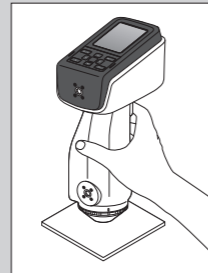


Pulse la tecla o mantenga pulsada la tecla de medición durante al menos 0,5 segundos



Pulse el botón de medición.

Medición de la muestra



Cambiar pantalla de muestra



Pulse el botón de medición.